

UPTOWN

26
26

COLE

DALLAS

Your Gateway to Uptown Dallas

UPTOWN
26
26
COLE
DALLAS

Blurring the Line of Work & Play

A beautiful, boutique office located within Dallas' highly sought-after Uptown neighborhood, 2626 Cole offers an exciting opportunity to establish a presence at the center of the city's most vibrant live-work-play environment.

Take Advantage

of the most pedestrian-friendly district in Dallas, connecting you to all the exciting amenities Uptown has to offer within a short walk, including a variety of casual and upscale restaurants, retail, fitness, arts and entertainment destinations.



Lobby Renovations Delivering Q1 2024

Convenience On & Off the Clock

Combined with tremendous access to Uptown's robust amenity and transit offerings, 2626 Cole provides modern features, exclusive tenant services, concierge-style security, underground parking, ample guest parking, and on-site management and engineering to offer tenants a first-class experience on and off the clock.



4

×

RENTABLE BUILDING AREA: 124,108 RSF
STORIES: 9
TYPICAL FLOOR SIZE: 14,000 RSF
PARKING RATIO: 3.0/1,000 SF
YEAR BUILT 1984
RENOVATED: 2017

- × Ample and convenient surface parking for visitors
- × Great proximity to Uptown amenities
- × Walking distance to Katy Trail & M-Line Trolley

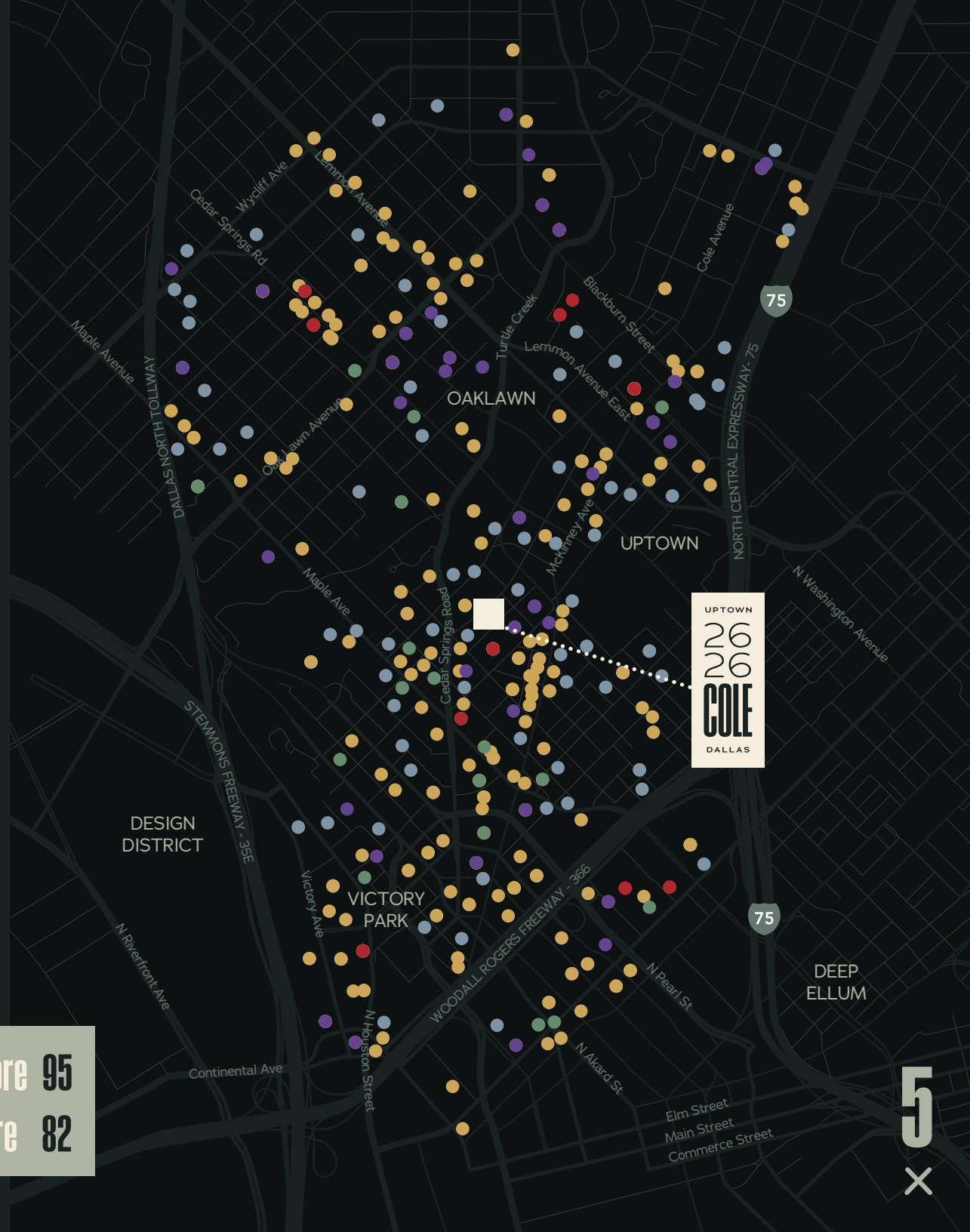
Amenities Map

Explore Uptown

With a new experience around every corner, 2626 Cole is your gateway to exploring the latest and greatest Uptown has to offer by foot, bike or train. Stay connected to an exciting array of bars, restaurants and entertainment, including The Quad, Uptown's upcoming mixed-use destination, featuring a one-acre urban lawn, new retail, alfresco dining, restaurants, and coffee, all just steps from your desk at 2626 Cole.

- 19 HOTELS
- 48 FITNESS
- 14 ENTERTAINMENT
- 312 RESTAURANTS & BARS
- 115 APARTMENTS

 **Walk Score 95**
 **Bike Score 82**



Access Map

Uptown

- 1 West Village
- 2 State Thomas Historic Neighborhood
- 3 The Crescent
- 4 Victory Park / American Airlines Center
- 5 Perot Museum

Downtown / Arts District

- 6 Klyde Warren Park
- 7 Dallas Museum of Art
- 8 Nasher Sculpture Center
- 9 Meyerson Symphony Center
- 10 AT&T Performing Arts Center
- 11 Plaza of the Americas
- 12 AT&T Discovery District
- 13 Dallas World Aquarium
- 14 West End

 Trolley

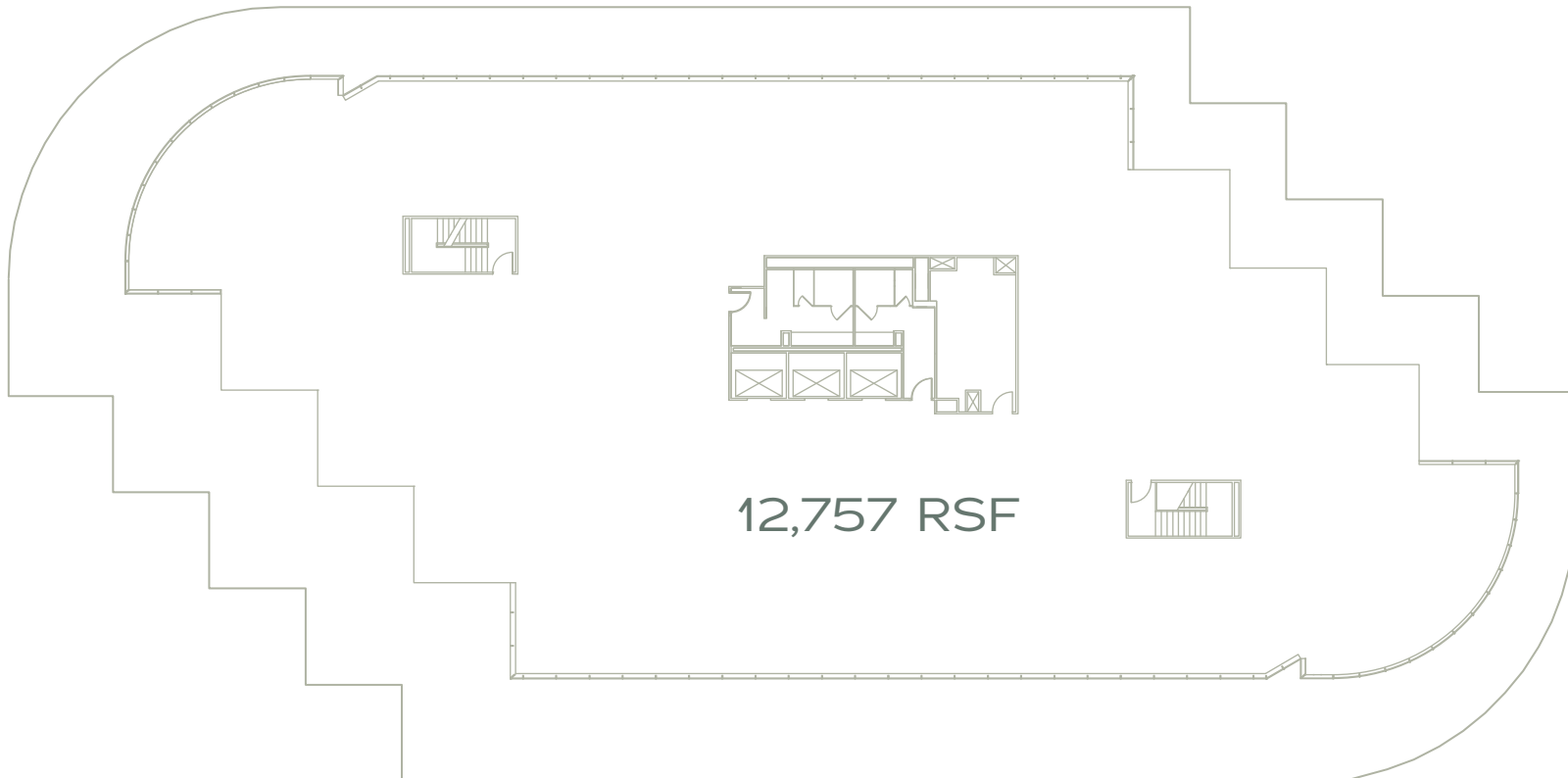


Typical Floor Plate

Floor 9 | 12,757 RSF



UPTOWN
26
26
COLE
DALLAS



For more information, please contact:

Matt Schendle

Vice Chairman

972 663 9634

matt.schendle@cushwake.com

Zach Bean

Director

214 770 2035

zach.bean@cushwake.com

Carrie Halbrooks

Director

972 663 9887

carrie.halbrooks@cushwake.com

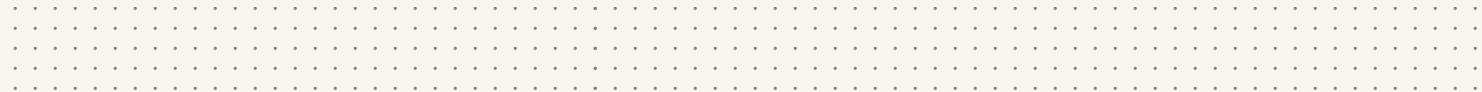
UPTOWN

26

26

COLE

DALLAS



TALON



©2023 Cushman & Wakefield. All rights reserved. The information contained in this communication is strictly confidential. This information has been obtained from sources believed to be reliable but has not been verified. NO WARRANTY OR REPRESENTATION, EXPRESS OR IMPLIED, IS MADE AS TO THE CONDITION OF THE PROPERTY (OR PROPERTIES) REFERENCED HEREIN OR AS TO THE ACCURACY OR COMPLETENESS OF THE INFORMATION CONTAINED HEREIN, AND SAME IS SUBMITTED SUBJECT TO ERRORS, OMISSIONS, CHANGE OF PRICE, RENTAL OR OTHER CONDITIONS, WITHDRAWAL WITHOUT NOTICE, AND TO ANY SPECIAL LISTING CONDITIONS IMPOSED BY THE PROPERTY OWNER(S). ANY PROJECTIONS, OPINIONS OR ESTIMATES ARE SUBJECT TO UNCERTAINTY AND DO NOT SIGNIFY CURRENT OR FUTURE PROPERTY PERFORMANCE.